



**1740 Pittwater Road Bayview NSW**

5 🏠 4 🚗 2 🚘

Exceptional quality in the construction of this truly outstanding sandstone residence. Nestled in a commanding and highly sought after location basking in the sun with a perfect north/east aspect and spectacular water views across Pittwater towards Lion Island

**Type** : House  
**Building Size** : 750 sqm  
**Land Size** : 1600 sqm  
**View** : <https://www.luschwitz.com.au/4569686>

The craftsmanship will impress and you will be dazzled by the simply stunning water views and serenity of the location. You will be soothed by the peace and tranquility of the water gently lapping the foreshore

The home has been designed with a wonderful free flowing floor plan having easy level access with LIFT to each level. Fabulous outdoor living and vast entertaining areas. 1,600M of private superbly landscaped gardens, lawns,

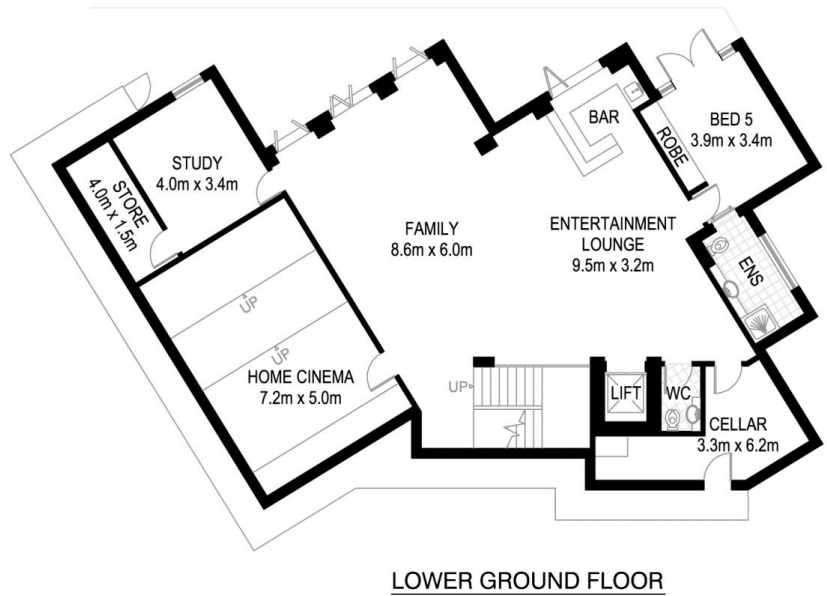
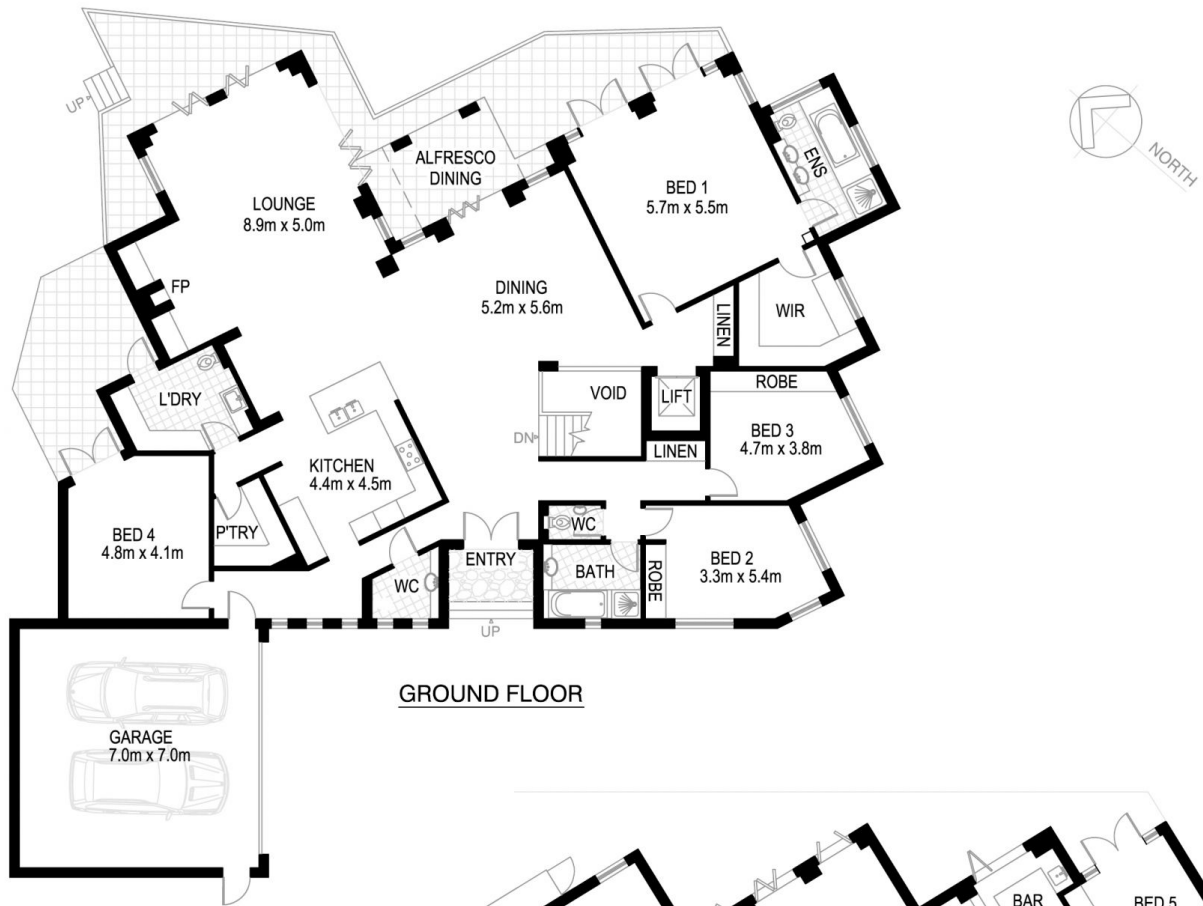


**John Luschwitz**  
**+612 9449 5511**



**Josh Luschwitz**  
**+612 9449 5511**

[For full version visit the website](#)



**BAYVIEW**  
 1740 PITTWATER ROAD  
 \*INTERNAL FLOOR AREA APPROX 534m<sup>2</sup>



**V-MARK DESIGN PTY LTD**  
 18/75 PACIFIC HIGHWAY  
 WATARA NSW 2077  
 OFFICE : 9489 9523  
 EMAIL : dave@vmarkdesign.com.au  
 ABN : 12 109 067 950

\*PLANS SHOWN ONLY INDICATIVE OF LAYOUT. DIMENSIONS ARE APPROXIMATE.

Floor plan supplied by V-Mark Design Pty Ltd. This floor plan is provided for indicative purposes only. Measurements are approximate and not to scale. The vendor, agency and supplier will accept no liability for its accuracy. Interested parties are advised to make their own independent enquiries.