

11 Park Avenue Gordon NSW

4 🏠 2 🚿 1 🚗

A UNIQUE OPPORTUNITY TO PURCHASE A HERITAGE VICTORIAN RESIDENCE

One of the finest examples of late Victorian architecture in excellent condition and renovated for modern day living while still retaining all its charms and period features. Elegant formal lounge and dining room with open fireplaces, 4 bedrooms, 2.5 bathrooms, the master's bedroom with its own ensuite and walk-in robe. Casual living and casual dining off the spacious kitchen. There is also a Piano Room/Library, a huge Laundry/Sewing Room and a Workshop that is every handyman's dream.

Period features include numerous open fireplaces with marble surround, high ceilings with decorative cornices,

[For full version visit the website](#)

Type : House

View : <https://www.luschwitz.com.au/4569685>



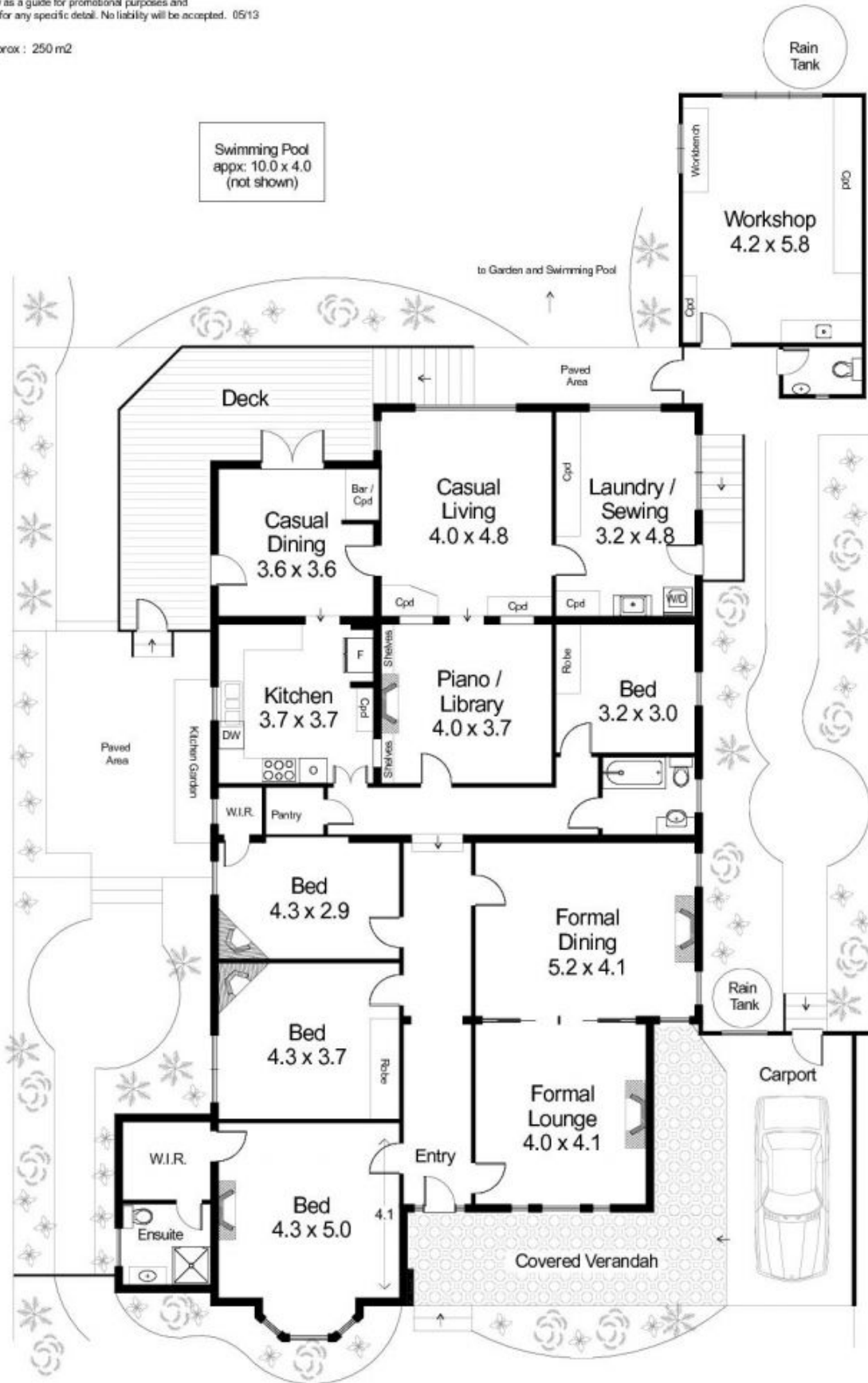
Ceto Sandoval
 + 612 9449 5511



Josh Luschwitz
 +612 9449 5511

Disclaimer : Purple Runner Pty Ltd A.B.N. 60 163 607 480
Trading as NORTHSIDE FLOORPLANS - Roseville Mob. 0402 073 101
This floor plan serves only as a guide for promotional purposes and
should not be relied upon for any specific detail. No liability will be accepted. 05/13

Internal Floor Area approx : 250 m2



11 Park Avenue, Gordon