



### 38 Fiddens Wharf Road Killara NSW

4 🏠 2 🚗 2 🚗

Set in magnificent 1132 sqm of manicured gardens and in a very convenient location, this property is opposite Killara Golf Course and only a short walk to Killara station.

A superb period residence that is meticulously maintained, this home has a modern rear extension, and is filled with warmth, charm and character. A clever use of skylights means plenty of natural light floods the interior.

From the moment you enter the front door, you are immediately greeted by an elegant hallway which flows to the formal lounge with open fireplace, bedrooms and study.

The spacious gourmet kitchen with stainless steel appliances leads to the huge casual living/dining area

**Type** : House  
**Land Size** : 1132 sqm  
**View** : <https://www.luschwitz.com.au/4569682>



**Ceto Sandoval**  
 + 612 9449 5511



**Josh Luschwitz**  
 +612 9449 5511

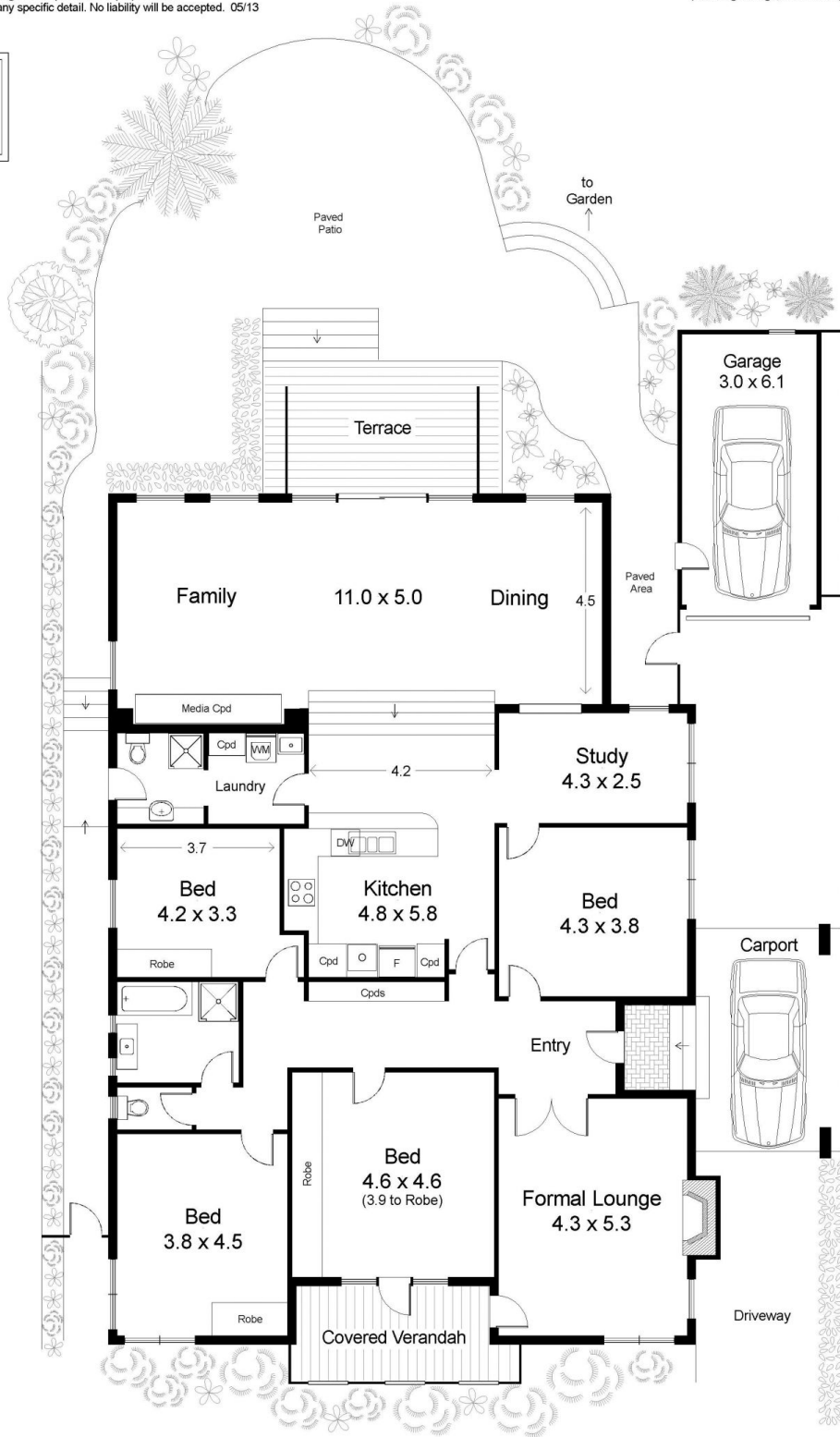
[For full version visit the website](#)

Disclaimer : Purple Runner Pty Ltd A.B.N. 60 163 607 480  
Trading as NORTHSIDE FLOORPLANS - Roseville Mob. 0402 073 101  
This floor plan serves only as a guide for promotional purposes and  
should not be relied upon for any specific detail. No liability will be accepted. 05/13

Internal Floor Area approx : 243 m2  
(including Garage; not including Attic, Terraces, etc.)



Attic Storage  
appx: 26 m2  
(not shown)



## 'Beloka'

38 Fiddens Wharf Road, Killara