



4 Bangalla Street Warrawee NSW

5 🚗 5 🚗 3 🚗

A superb Federation on a grand scale, "Pinehurst" is one of the Upper North Shore's most beautiful residences. This impeccably presented home, originally owned and renovated by renowned Sydney architect Harvey Little, offers a rare opportunity to own a prestige home in a blue ribbon location, close to rail, shops and leading schools.

The home offers 5 bedrooms, the master suite with en-suite and dressing room, 5 bathrooms, a formal reception room, banquet dining and gourmet kitchen overlooking spacious, casual living, outside eating area with stainless steel built-in barbeque, salt water swimming pool and North facing gardens.

Set in exquisite landscaped hedged gardens, this 1913

[For full version visit the website](#)

Type : House

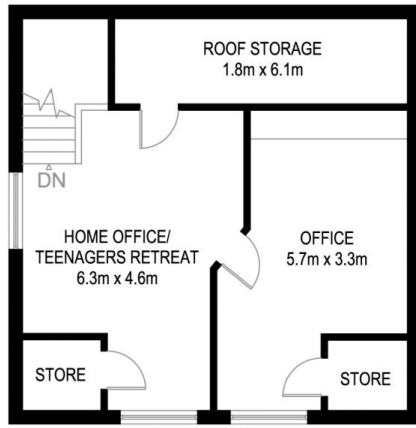
View : <https://www.luschwitz.com.au/4569673>



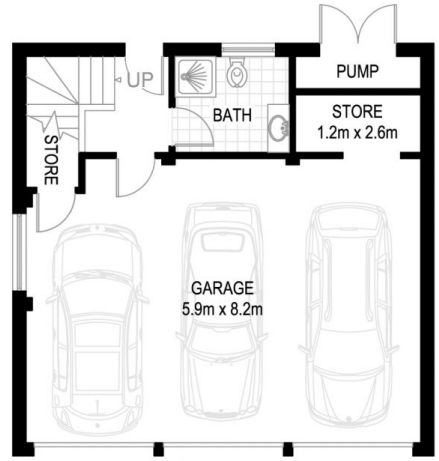
Ceto Sandoval
 + 612 9449 5511



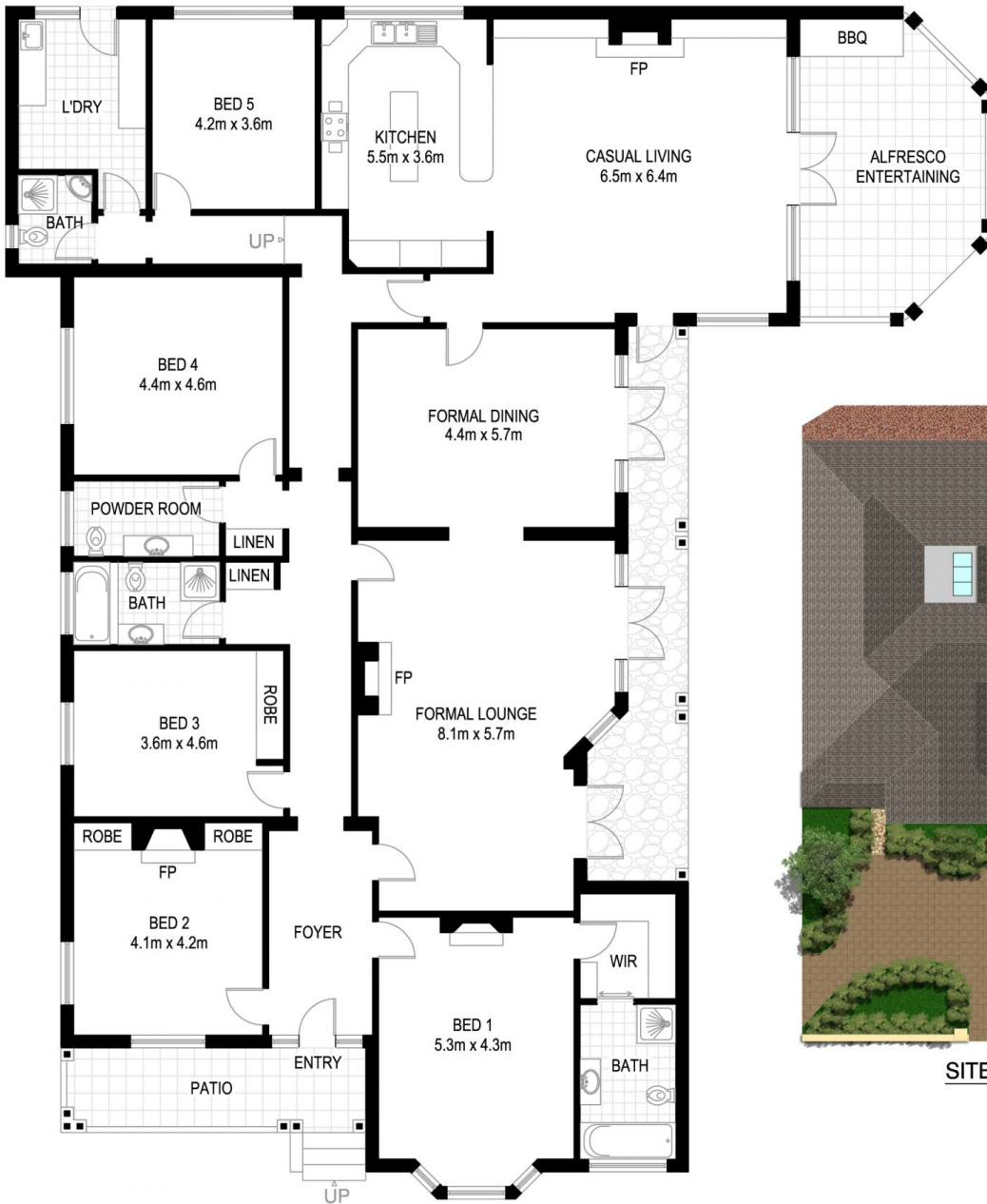
Josh Luschwitz
 +612 9449 5511



FIRST FLOOR
(NOT ACTUAL LOCATION)



GROUND FLOOR
(NOT ACTUAL LOCATION)



SITE PLAN



V-MARK DESIGN PTY LTD
18/75 PACIFIC HIGHWAY
WATARA NSW 2077
OFFICE : 9489 9523
EMAIL : dave@vmarkdesign.com.au
ABN : 12 109 067 950

*PLANS SHOWN ONLY INDICATIVE OF LAYOUT. DIMENSIONS ARE APPROXIMATE.

Floor plan supplied by V-Mark Design Pty Ltd. This floor plan is provided for indicative purposes only.

Measurements are approximate and not to scale. The vendor, agency and supplier will accept no liability for its accuracy. Interested parties are advised to make their own independent enquiries.

WARRAWEE
4 BANGALLA STREET
*INTERNAL FLOOR AREA APPROX 471m²