



14 Lawley Crescent Pymble NSW

4  2  2 

First time offered in 48 years this much loved, spacious, traditional English style family residence. The garden is enchanting filled with beautiful ancient camellias, sasanquas, magnolia, cherry blossom and azaleas with plenty of room of children to play

Entry foyer leads to impressive formal lounge and dining with open fire place and French doors flowing to the garden. Modern kitchen with casual meals area and adjoining family/living overlooks the sparkling swimming pool

Excellent family accommodation with 4 double bedrooms all with built-in robes and main with en suite plus separate study and 5th bedroom or Rumpus/Media room (would also

Type : House
Land Size : 2689 sqm
View : <https://www.luschwitz.com.au/4569643>



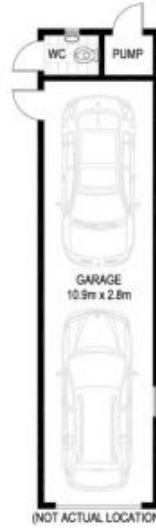
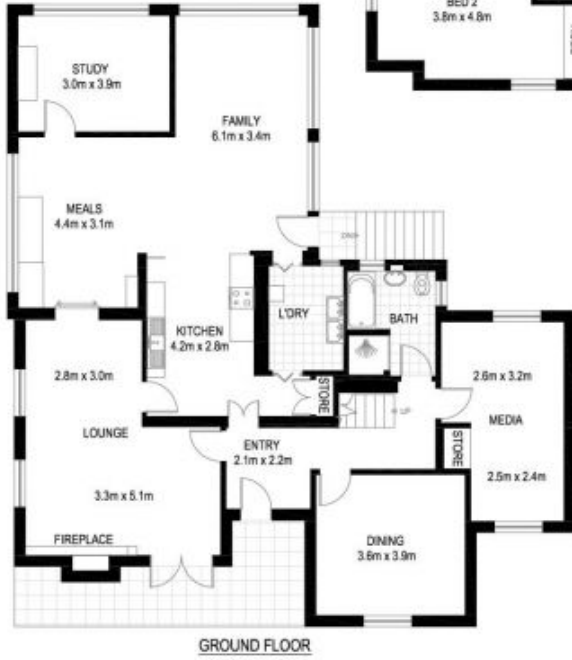
John Luschwitz
 +612 9449 5511



Josh Luschwitz
 +612 9449 5511

[For full version visit the website](#)

PYMBLE
14 LAWLEY CRESCENT
 *INTERNAL FLOOR AREA APPROX 248m²



*NOTE: ALL DIMENSIONS SHOWN ARE APPROXIMATE AND SHOULD ONLY BE USED AS A GUIDE. NOT TO SCALE.