



### 23 Telegraph Road Pymble NSW

2 🏠 1 🚗

3,927sqm of land in a "parklike" setting with existing North/South Tennis court. Superb land with an existing bungalow ready to renovate, extend or demolish to build the dream home (S.T.C.A). Enjoy space, serenity and the sunny northern aspect

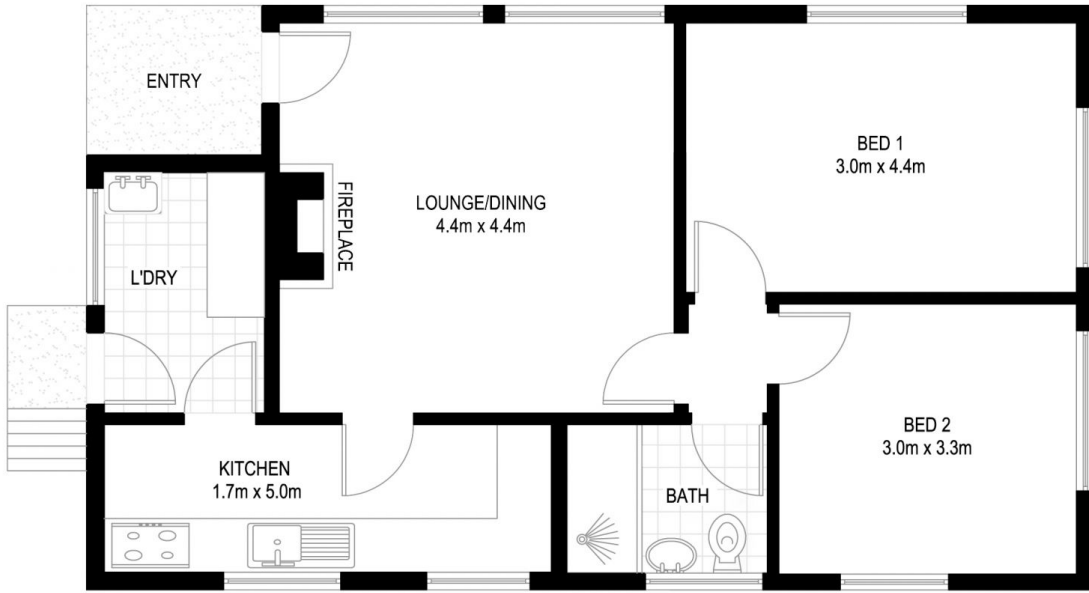
**Type** : Land  
**Land Size** : 3927 sqm  
**View** : <https://www.luschwitz.com.au/4569618>

Surrounded by magnificent properties this presents a stunning opportunity to create something exceptional and capitalise on its location to bring to its full potential to enjoy the wonderful family environment.

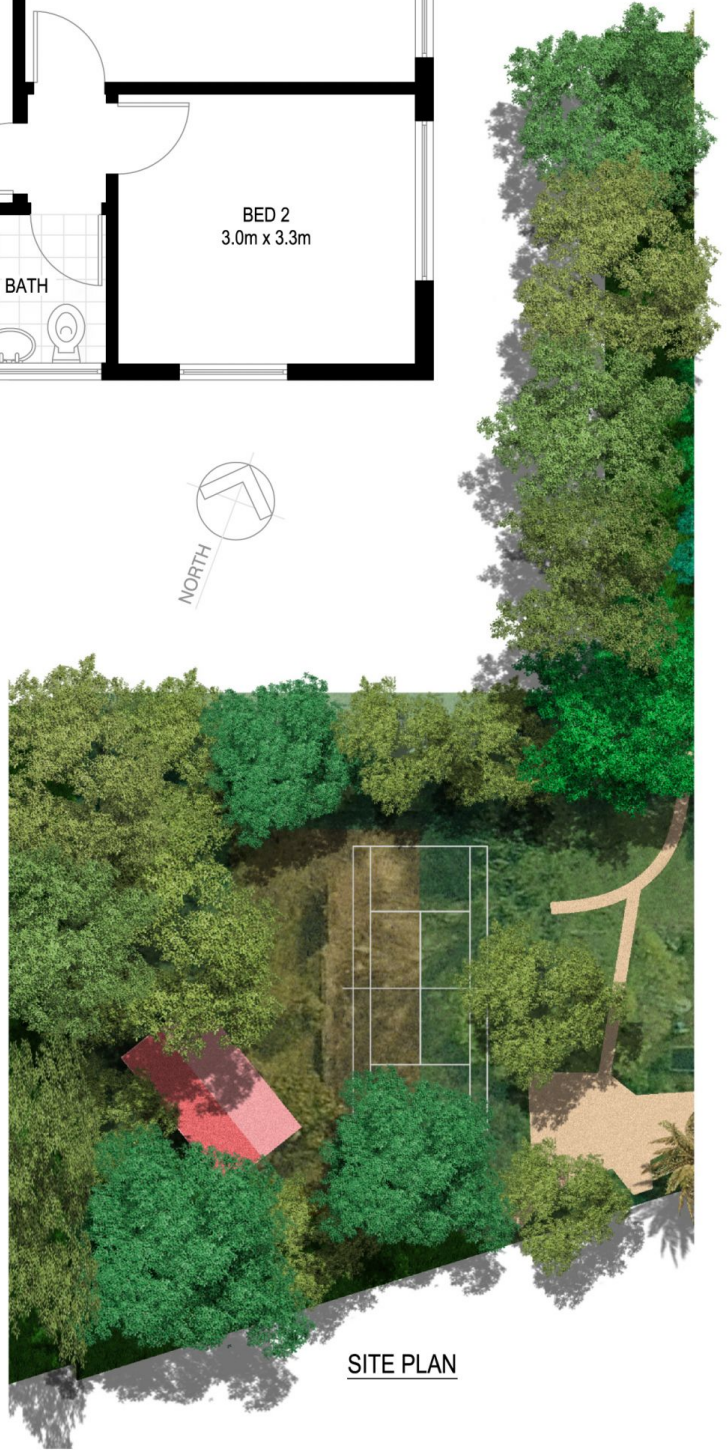
Don't miss it! Properties like these are seldom seen - This is the last large private land holding available for sale in Pymble.



**Mark Blake**  
**+612 9449 5511**



**PYMBLE**  
**23 TELEGRAPH ROAD**  
 \*INTERNAL FLOOR AREA APPROX 64m<sup>2</sup>



SITE PLAN



**VMARK DESIGN PTY LTD**  
 18/75 PACIFIC HIGHWAY  
 WAITARA NSW 2077  
 OFFICE : 9489 9523  
 EMAIL : dave@vmarkdesign.com.au  
 ABN : 12 109 067 950

\*NOTE: ALL DIMENSIONS SHOWN ARE APPROXIMATE AND SHOULD ONLY BE USED AS A GUIDE. NOT TO SCALE.