


**27 Lonsdale Avenue Berowra Heights NSW**

3 🛏 1 🚿 3 🚗

Great family home in beautiful level 696M garden setting basking in the sun. Quality built, fastidiously maintained and immaculately presented. 3 bedrooms (built-ins). Updated kitchen with dining area. Formal living room. Bathroom and separate WC. Covered verandah ideal for alfresco entertaining. Excellent garaging with covered carport space for 6 berth caravan or boat. Secure basement ideal for home handy man, hobbyist or perfect wine cellar. Includes reverse cycle air conditioning, carpets (or polished floor boards) etc Relax in the quiet sunny garden amongst the vegetables and citrus trees!

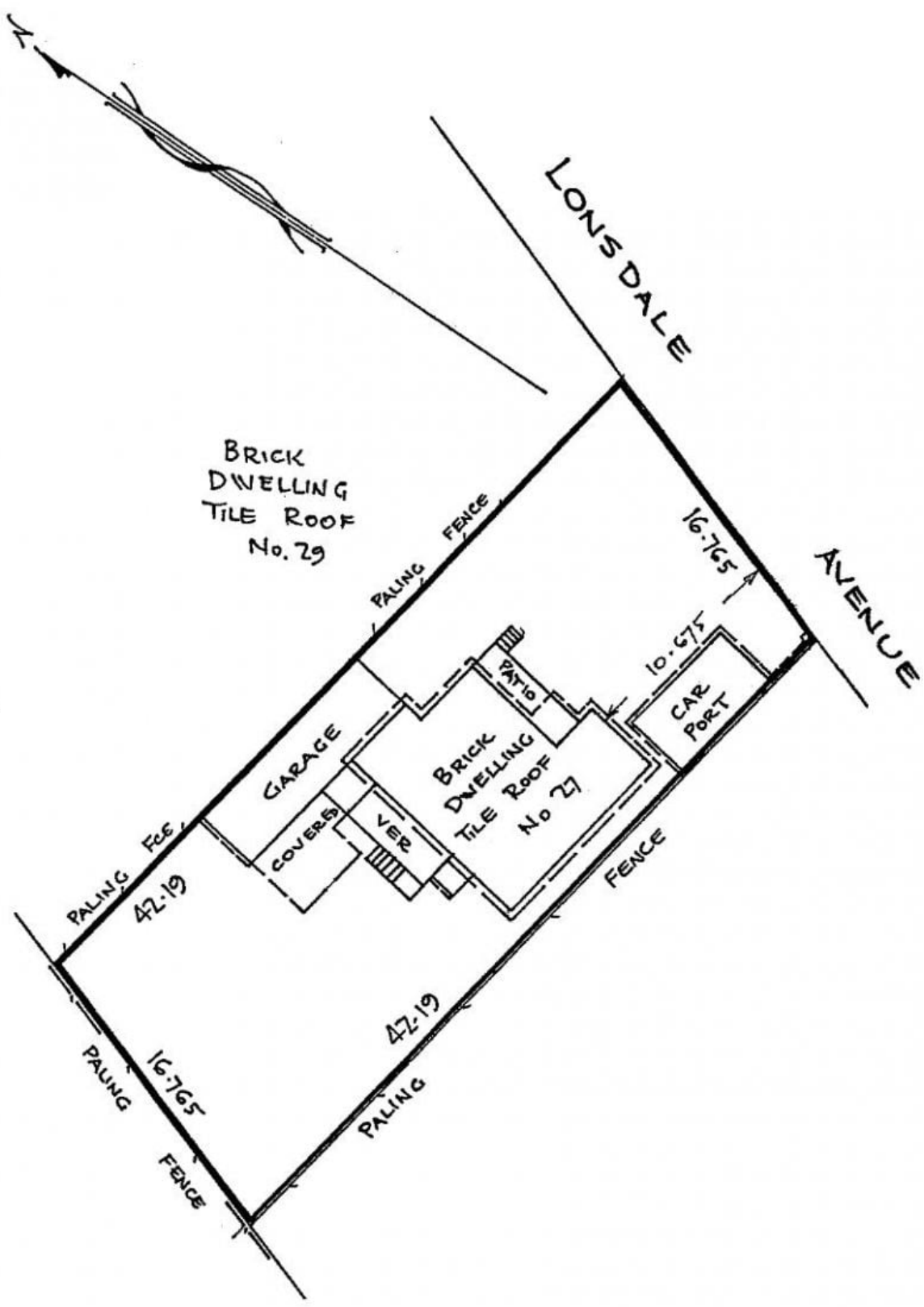
**Type** : House  
**Land Size** : 696 sqm  
**View** : <https://www.luschwitz.com.au/4569583>



**John Luschwitz**  
 +612 9449 5511



**Josh Luschwitz**  
 +612 9449 5511

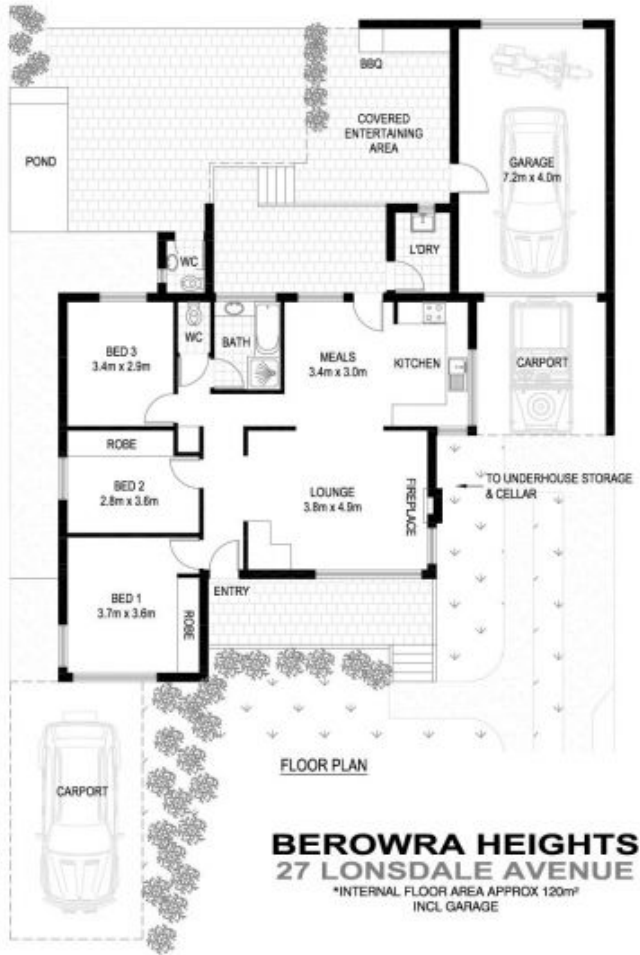




SITE PLAN



V-MARK DESIGN PTY LTD  
 18/75 PACIFIC HIGHWAY  
 WATARA NSW 2077  
 PHONE : 9489 9523  
 EMAIL : dave@vmarkdesign.com.au  
 ABN : 12 109 067 950



**BEROWRA HEIGHTS  
 27 LONSDALE AVENUE**

\*INTERNAL FLOOR AREA APPROX 120m<sup>2</sup>  
 INCL GARAGE

\*NOTE: ALL DIMENSIONS SHOWN ARE APPROXIMATE AND SHOULD ONLY BE USED AS A GUIDE. NOT TO SCALE.