




5/125 Merrivale Lane Turramurra NSW

3  3  2 

Top quality David Emerson designed development of 6 very grand and exceptionally well constructed and impeccably presented apartments. Magnificent 258M north east corner penthouse with spectacular views over the serene Pymble Golf Course. Absolute top floor with level entry from the street and lift access to 2 car secure parking and large storage/cellar. Spacious open plan living flows to wrap around tiled balcony perfect for alfresco dining and entertaining. 3 bedroom 2+ bathroom accommodation. 2 with en suite bathrooms plus full guest bathroom and laundry. Brilliant kitchen with Corian bench tops, imported appliances, integrated fridge, dishwasher, butlers pantry. Glamorous bathrooms with marble and limestone finishes, frameless shower screens and top quality fittings. Includes ducted reverse cycle air conditioning system , intercom

Type : Apartment
Building Size : 258 sqm
View : <https://www.luschwitz.com.au/4569580>

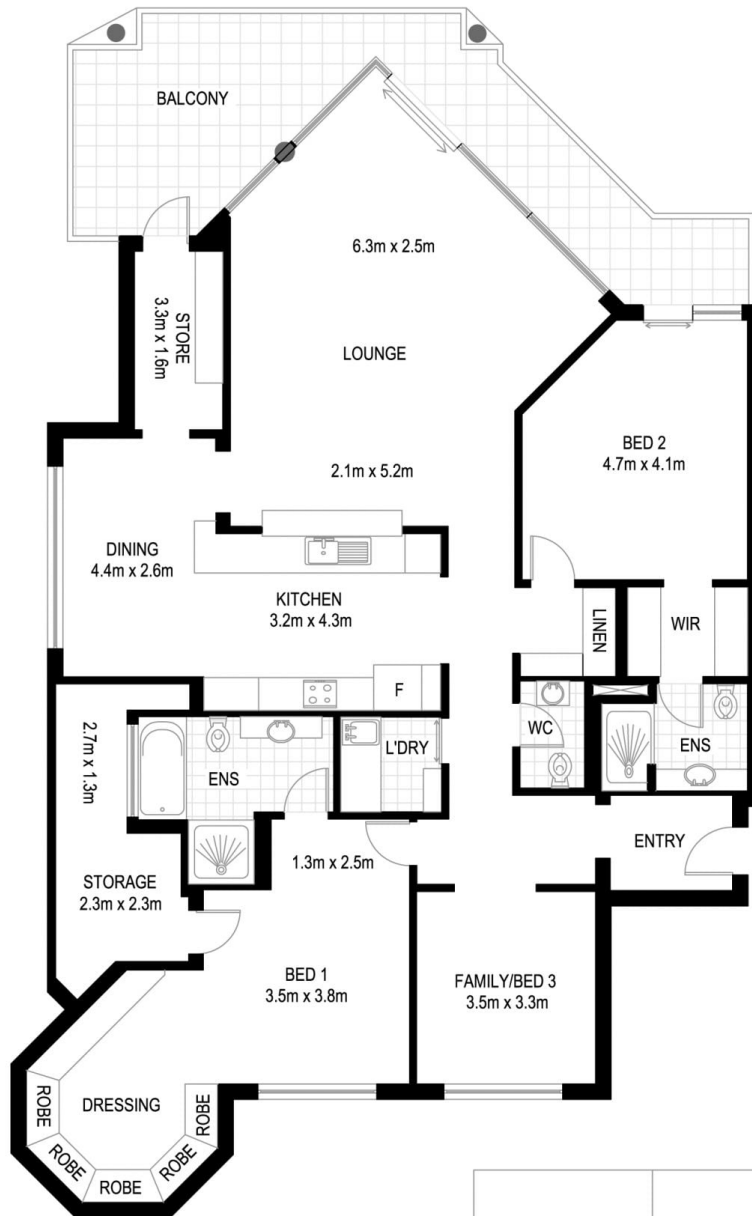


John Luschwitz
 +612 9449 5511



Josh Luschwitz
 +612 9449 5511

[For full version visit the website](#)



(NOT ACTUAL LOCATION)



(NOT ACTUAL LOCATION)



VMARK DESIGN PTY LTD
18/75 PACIFIC HIGHWAY
WAITARA NSW 2077
OFFICE : 9489 9523
EMAIL : dave@vmarkdesign.com.au
ABN : 12 109 067 950

TURRAMURRA

5/125 MERRIVALE LANE

*INTERNAL FLOOR AREA APPROX 190m²

*NOTE: ALL DIMENSIONS SHOWN ARE APPROXIMATE AND SHOULD ONLY BE USED AS A GUIDE. NOT TO SCALE.